

TYPE A1

42.0 m² / 452 ft²
(inclusive of 5m² Balcony & 3m² AC Ledge)

- Blk 19, #02-04* to #04-04*
- #02-05* to #04-05*
- #02-06 to #04-06
- Blk 21, #02-11 to #04-11
- #02-12 to #04-12

TYPE A1-G

56.0 m² / 603 ft²
(inclusive of 5m² PES, 3m² AC Ledge & 14m² Void over Living, Dining & Kitchen)

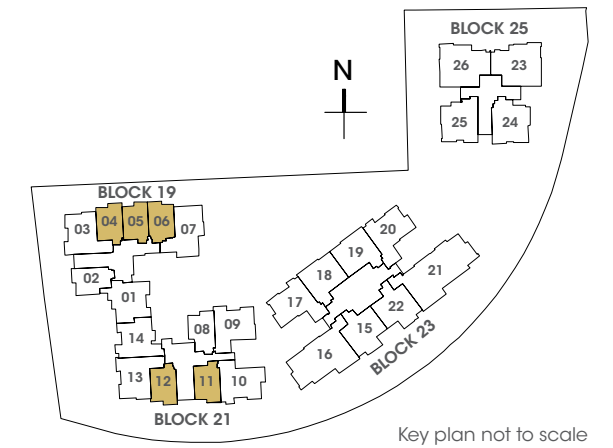
- Blk 19, #01-04*, #01-05* & #01-06
- Blk 21, #01-11 to #01-12

TYPE A1-PH

56.0 m² / 603 ft²
(inclusive of 5m² Balcony, 3m² AC Ledge & 14m² Void over Living, Dining & Kitchen)

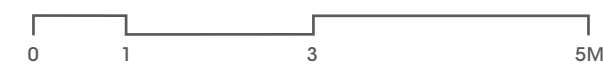
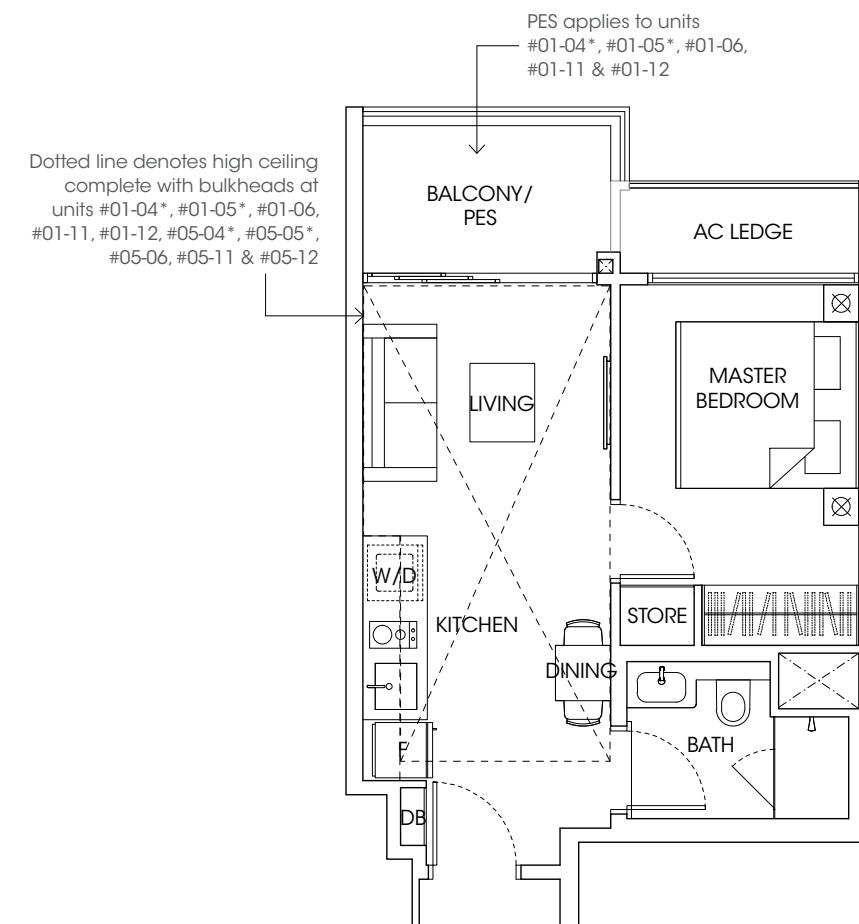
- Blk 19, #05-04*, #05-05* & #05-06
- Blk 21, #05-11 to #05-12

**Mirror Image*



A HOUSE IS MADE WITH WALLS AND BEAMS;
A HOME IS BUILT WITH
LOVE AND DREAMS.

Ralph Waldo Emerson



LEGEND:

- Washer/Dryer
- Fridge
- Distribution Board

All plans are subject to changes by the relevant authorities. Measurements are approximate only and subject to final survey. Information accurate at the point of printing. BP no.: A712-04181-2018-BP01

TYPE B1A

64.0 m² / 689 ft²
(inclusive of 7m² Balcony & 5m² AC Ledge)

Blk 19, #02-03* to #04-03*
Blk 21, #02-13 to #04-13

TYPE B1A-G

82.0 m² / 883 ft²
(inclusive of 7m² PES, 5m² AC Ledge & 18m² Void over Living, Dining & Kitchen)

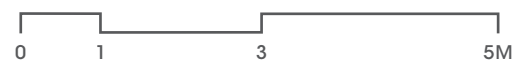
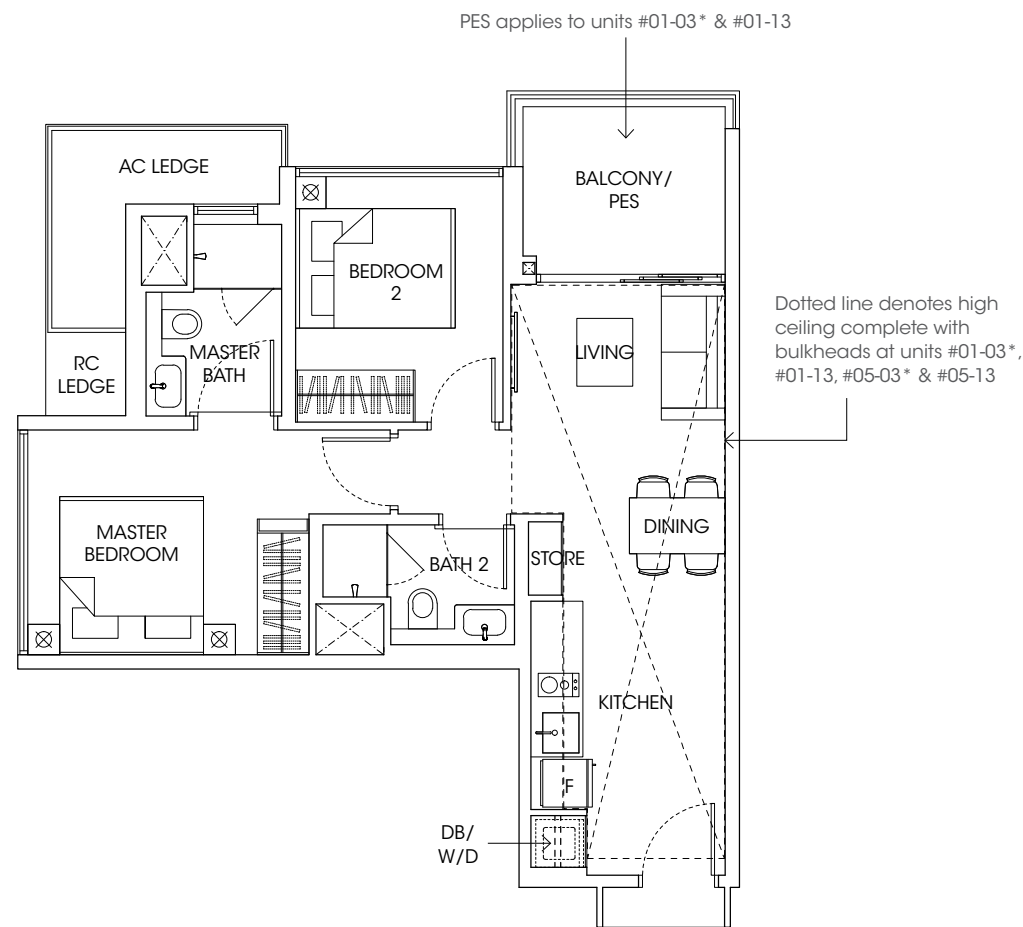
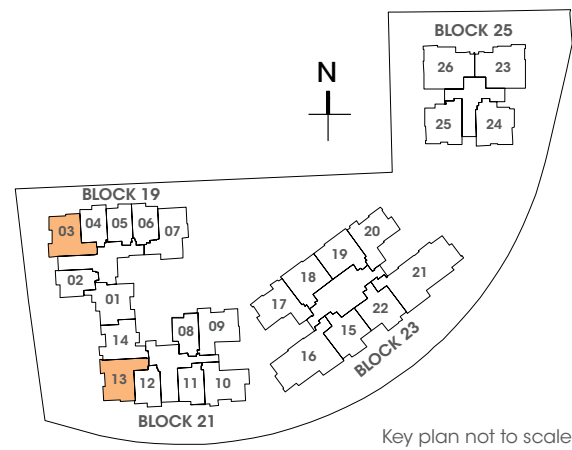
Blk 19, #01-03*
Blk 21, #01-13

TYPE B1A-PH

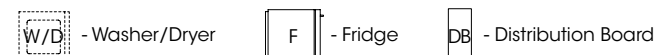
82.0 m² / 883 ft²
(inclusive of 7m² Balcony, 5m² AC Ledge & 18m² Void over Living, Dining & Kitchen)

Blk 19, #05-03*
Blk 21, #05-13

*Mirror Image



LEGEND:



All plans are subject to changes by the relevant authorities. Measurements are approximate only and subject to final survey. Information accurate at the point of printing. BP no.: A712-04181-2018-BP01

TYPE B1B

64.0 m² / 689 ft²
(inclusive of 7m² Balcony & 5m² AC Ledge)

Blk 21, #02-10 to #04-10

TYPE B1B-G

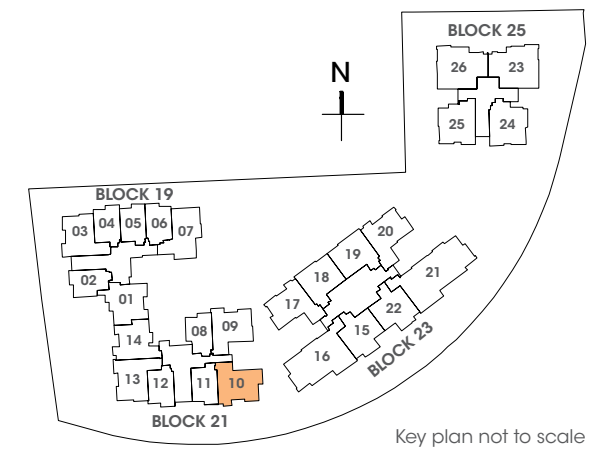
80.0 m² / 861 ft²
(inclusive of 7m² PES, 5m² AC Ledge & 16m² Void over Living, Dining & Kitchen)

Blk 21, #01-10

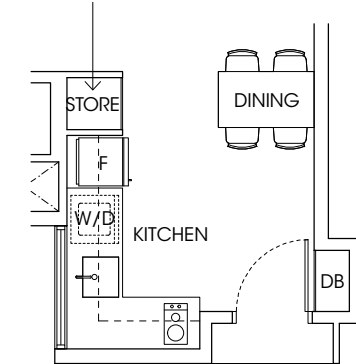
TYPE B1B-PH

80.0 m² / 861 ft²
(inclusive of 7m² Balcony, 5m² AC Ledge & 16m² Void over Living, Dining & Kitchen)

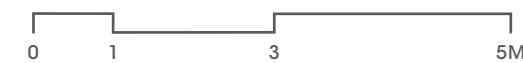
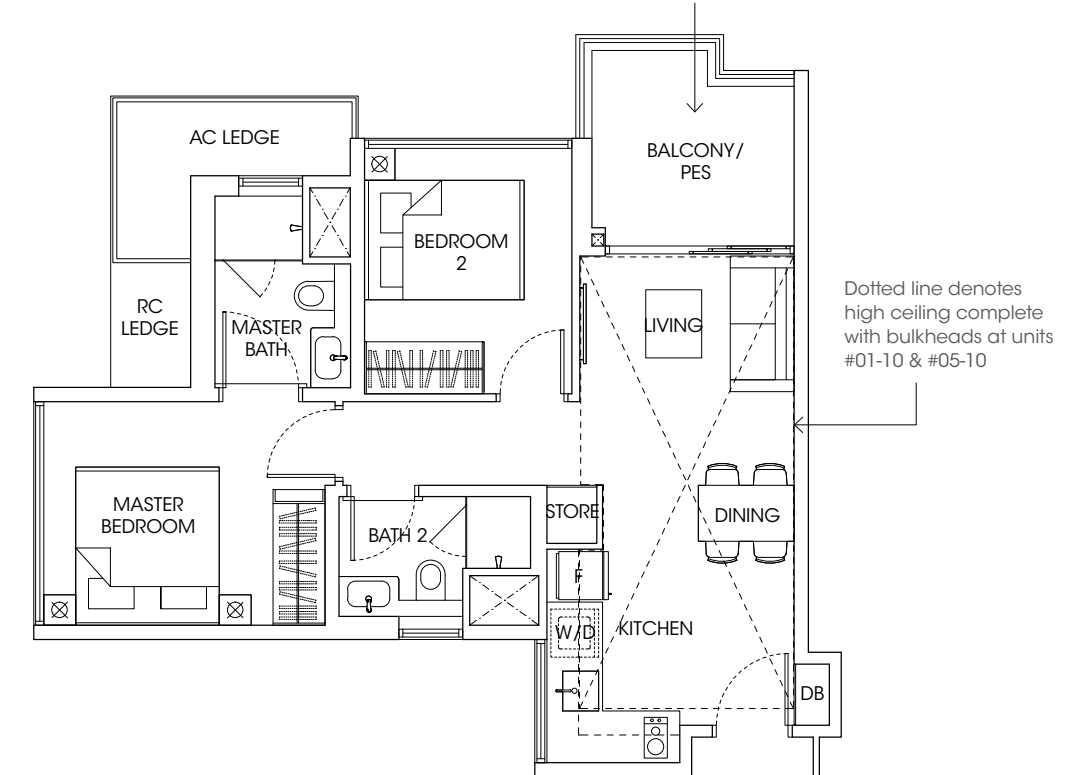
Blk 21, #05-10



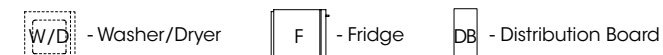
Store layout applies to units #02-10 to #04-10



PES applies to units #01-10



LEGEND:



All plans are subject to changes by the relevant authorities. Measurements are approximate only and subject to final survey. Information accurate at the point of printing. BP no.: A712-04181-2018-BP01

TYPE C2

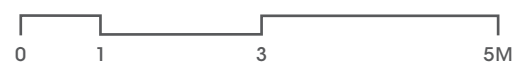
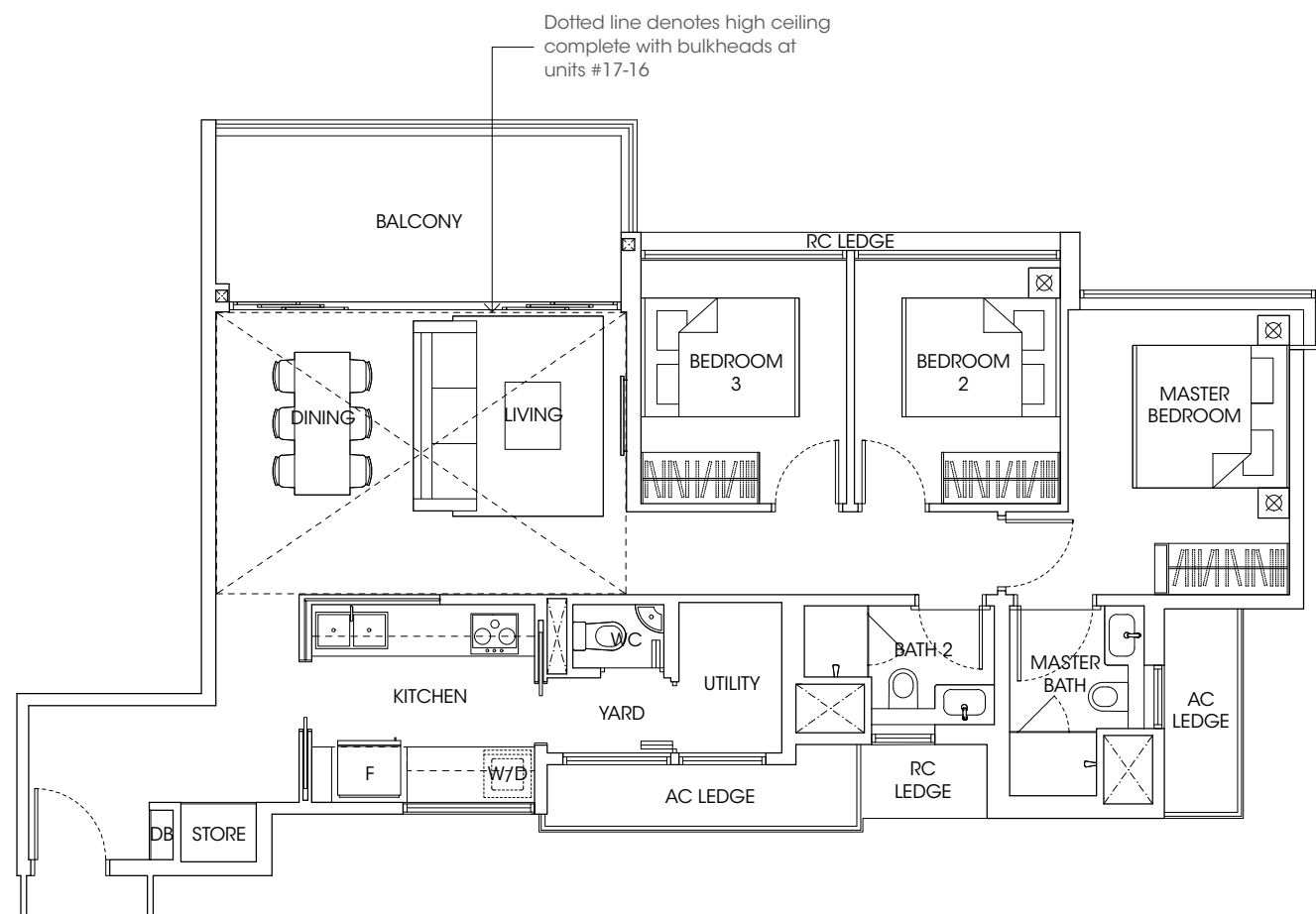
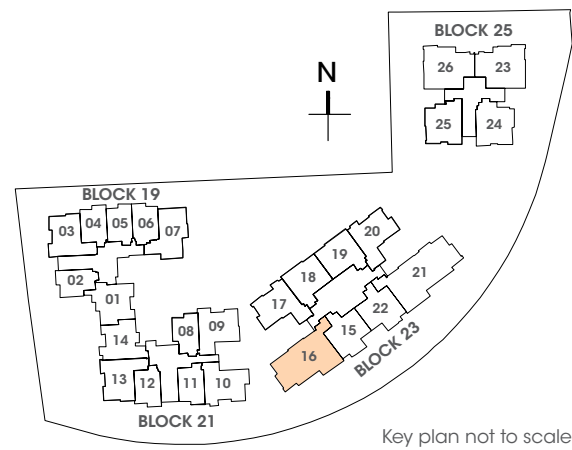
107.0 m² / 1152 ft²
(inclusive of 12m² Balcony & 7m² AC Ledge)

Blk 23, #02-16 to #16-16

TYPE C2-PH

127.0 m² / 1367 ft²
(inclusive of 12m² Balcony, 7m² AC Ledge & 20m² Void over Dining & Living)

Blk 23, #17-16



LEGEND:

- Washer/Dryer
- Fridge
- Distribution Board

All plans are subject to changes by the relevant authorities. Measurements are approximate only and subject to final survey. Information accurate at the point of printing. BP no.: A712-04181-2018-BP01

TYPE D1

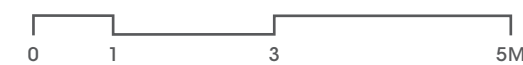
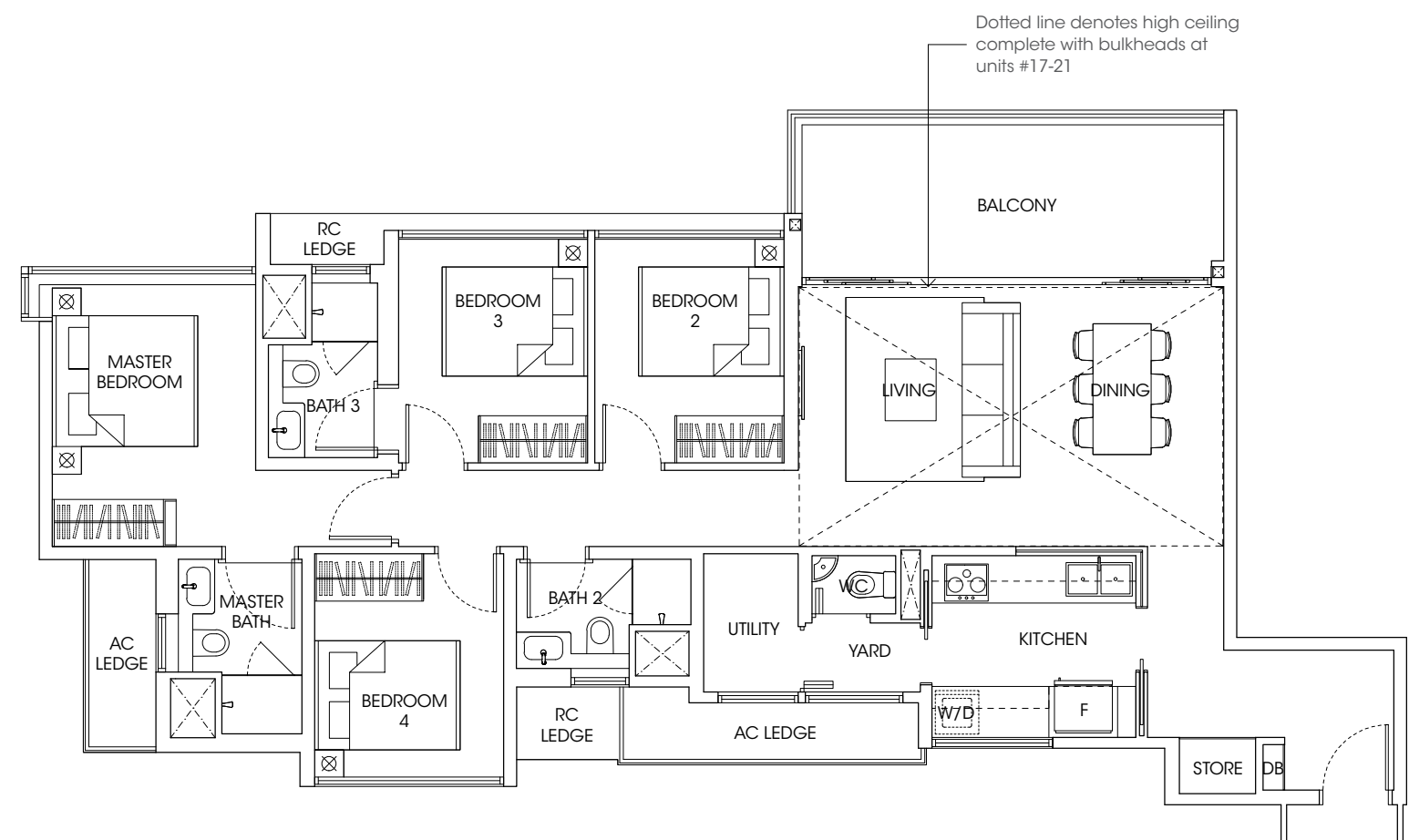
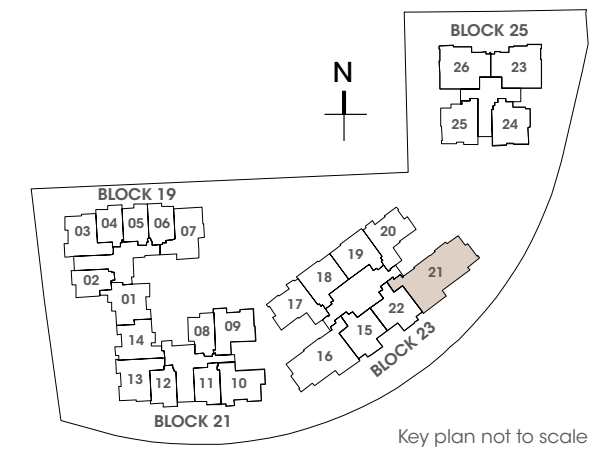
127.0 m² / 1367 ft²
(inclusive of 14m² Balcony & 7m² AC Ledge)

Blk 23, #02-21 to #16-21

TYPE D1-PH

149.0 m² / 1604 ft²
(inclusive of 14m² Balcony, 7m² AC Ledge & 22m² Void over Living & Dining)

Blk 23, #17-21



LEGEND:

- Washer/Dryer
- Fridge
- Distribution Board

All plans are subject to changes by the relevant authorities. Measurements are approximate only and subject to final survey. Information accurate at the point of printing. BP no.: A712-04181-2018-BP01